



HEALTH & CARE COURSES



ACCREDITATIONS & ASSOCIATIONS

Australian Skills Quality Authority (ASQA)

ASQA is the recognition and registering authority in Australia for all RTOs that issue Australian Qualifications Framework (AQF) qualifications and statements of attainment. Quality assured and nationally recognised training and qualifications, including being approved to provide courses to overseas students studying in Australia and listed on the Commonwealth Register of Institutions and Courses for Overseas Students (CRICOS).

Recognition of Prior Learning (RPL)

RPL assesses a person's skills and knowledge they have achieved through informal education and training, as well as course credit for previous formal education and training. RPL is only available for Australian Qualifications Framework (AQF) awards. Contact us for more information on how to apply.

Flexible Learning & Assessment

Greenwich College programs have flexible delivery methods and we ensure assessments are fair and equitable. We vary our learning methods as well as provide flexible assessments to meet individual special learning needs. The important focus is placed on the student achieving the required learning outcomes, competencies, and/or the standards rather than the method itself.

Australian Quality Training Framework (AQTF)

The AQTF is the national set of standards which assures nationally consistent, high quality vocational training and assessments in Australia.



Greenwich College is a proud member of the NextEd Group, a leading training provider delivering accredited and non-accredited education and training solutions throughout Australia and internationally.



TABLE OF CONTENTS

04	Greenwich College Campuses
06	Health & Care Overview
07	Certificate III in Individual Support (Ageing & Disability)
08	Certificate IV in Ageing Support
09	Diploma of Community Services (Case Management)
10	Entry Requirements & Industry Placement
11	Other & Online Courses at Greenwich College
13	Further Study Options



GREENWICH COLLEGE **CAMPUSES**

Greenwich College has six campuses across Australia offering our Health & Care courses. Our well-equipped campuses in Sydney, Melbourne, Brisbane, Gold Coast, Perth and Adelaide are purpose-built for students' learning, including modern facilities, spacious classrooms and attractive breakout areas.

Our new health care labs are equipped with the latest equipment necessary to enhance students hands-on practical learning experience in preparation for real-life in ageing and disability facilities.

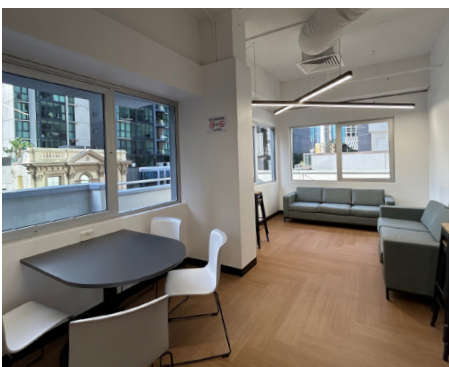
SYDNEY



MELBOURNE



BRISBANE





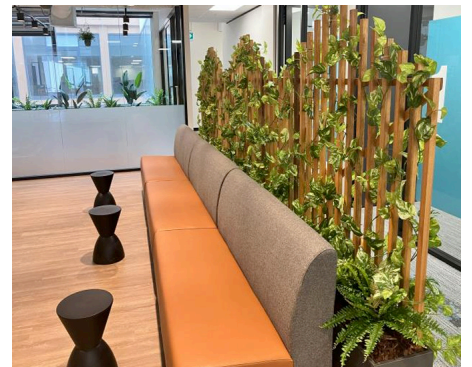
GOLD COAST



PERTH



ADELAIDE



HEALTH & CARE COURSES OVERVIEW

EMBARK ON A REWARDING JOURNEY IN THE THRIVING HEALTHCARE INDUSTRY WITH GREENWICH COLLEGE.

With professional trainers boasting extensive industry experience, our courses are designed to meet the rising demand for skilled professionals, aligning with the Australian government's projection of a 15.8% job growth in Health Care and Social assistance by 2026. Our comprehensive curriculum ensures you gain practical skills and industry-relevant knowledge, providing a solid foundation for a successful career. **Join us and make a meaningful difference in the world of healthcare.**

EXAMPLE PATHWAYS TO A QUALITY CAREER



CHC33021 AGEING & DISABILITY CERTIFICATE III IN INDIVIDUAL SUPPORT

This dual qualification entry level course is designed for students who are interested in pursuing a career in the aged care, disability support or community services sectors. It's a course for those who are compassionate, patient, and have a genuine desire to help others.

COURSE DURATION 4 TERMS • 32 WEEKS	
Term 1, 2 & 3	In class
Term 4	Work placement
24 Weeks	Study
8 Weeks	Holiday
120 Hours	Work placement

Work placement is to be undertaken in an appropriate health care facility or community services environment.

CAREER PATHWAY
✔ Personal Care Assistant
✔ Respite Care Worker
✔ Lifestyle Support Worker
✔ Community Support Worker
✔ Disability Support Worker
✔ Aged Care Worker
✔ Nursing Assistant

CORE UNITS (9)
CHCCOM005 Communicate and work in health or community services
HLTWHS002 Follow safe work practices for direct client care
CHCLEG001 Work legally and ethically
CHCDIV001 Work with diverse people
CHCCCS041 Recognise healthy body systems
CHCCCS031 Provide individualised support
CHCCCS038 Facilitate the empowerment of people receiving support
CHCCCS040 Support independence and wellbeing
HLTINF006 Apply basic principles and practices of infection prevention and control

ELECTIVE UNITS (6)
CHCPAL003 Deliver care services using a palliative approach
CHCDIS011 Contribute to ongoing skills development using a strengths-based approach
CHCAGE013 Work effectively in aged care
CHCDIS020 Work effectively in disability support
CHCAGE011 Provide support to people living with dementia
CHCDIS012 Support community participation and social inclusion

CHC43015

CERTIFICATE IV IN AGEING SUPPORT

The Certificate IV in Ageing Support is a more advanced qualification that builds on the basic skills acquired in the Certificate III in Individual Support. It prepares students to take on a more senior role, contributing effectively to the well-being of older people in residential and community settings.

COURSE DURATION 6 TERMS • 52 WEEKS	
Term 1, 2, 3, 4 & 5	In class
Term 6	Work placement
36 Weeks	Study
16 Weeks	Holiday
120 Hours	Work placement

Work placement is to be undertaken in an appropriate health care facility or community services environment.

CAREER PATHWAY
✓ Aged Care Worker
✓ Personal Care Worker
✓ Care Service Employee
✓ Care Support Worker
✓ Care Team Leader
✓ Client Care Advisor
✓ Community Care Worker
✓ Personal Care Worker

CORE UNITS (15)
CHCDIV001 Work with diverse people
HLTAAP001 Recognise healthy body systems
CHCCCS031 Provide individualised support
HLTWHS002 Follow safe work practices for direct client care
CHCAGE011 Provide support to people living with dementia
CHCPAL003 Deliver care services using a palliative approach
CHCPRP001 Develop and maintain networks and collaborative partnerships
CHCASV001 Facilitate the interests and rights of clients
CHCAGE009 Provide services for older people
CHCCCS038 Facilitate the empowerment of people receiving support
CHCAGE010 Implement interventions with older people to reduce risk
CHCCCS036 Support relationships with carer and family
CHCCCS006 Facilitate individual service planning and delivery
CHCLEG003 Manage legal and ethical compliance
CHCCCS040 Support independence and wellbeing

ELECTIVE UNITS (3)
CHCDIS018 Facilitate ongoing skills development using a person centered approach
CHCDIS017 Facilitate community participation and social inclusion
HLTAID011 Provide first aid

CHC52021 CASE MANAGEMENT DIPLOMA OF COMMUNITY SERVICES

This Diploma program is designed for students who wish to pursue careers as community service managers, coordinators, or team leaders.

This course extends beyond aged care and focuses on a broader range of community services. This diploma is suitable for students aspiring to work in leadership or management roles within community service organisations, dealing with diverse social issues such as homelessness, mental health, and family support.

COURSE DURATION 6 TERMS • 52 WEEKS	
Term 1, 2, 3, 4 & 5	In class
Term 6	Work placement
36 Weeks	Study
16 Weeks	Holiday
200 Hours	Work placement

Work placement is to be undertaken in an appropriate health care facility or community services environment.

CAREER PATHWAY
✔ Case Coordinator
✔ Case Management Supervisor
✔ Case Worker or Case Manager
✔ Community Care Worker
✔ Community Services Worker
✔ Community Services Manager
✔ Welfare Support Worker
✔ Program Coordinator
✔ Team Leader

CORE UNITS (12)
HLTWHS003 Maintain work health and safety
CHCLEG003 Manage legal and ethical compliance
CHCDIV001 Work with diverse people
CHCDIV002 Promote Aboriginal and/or Torres Strait Islander cultural safety
CHCDEV005 Analyse impacts of sociological factors on people in community work and services
CHCDFV001 Recognise and respond appropriately to domestic and family violence
CHCCSM013 Facilitate and review case management
CHCMFT005 Facilitate workplace debriefing and support processes
CHCCCO19 Recognise and respond to crisis situations
CHCCCS004 Assess co-existing needs
CHCCCS007 Develop and implement service programs
CHCPRP003 Reflect on and improve own professional practice

ELECTIVE UNITS (8)
CHCCSM012 Coordinate complex case requirements
CHCCSM014 Provide case management supervision
CHCCSM010 Implement case management practice
CHCCSM016 Undertake advanced assessments
CHCMHS011 Assess and promote social, emotional and physical wellbeing
CHCDIS016 Develop and promote positive person-centred behaviour supports
CHCDIS015 Develop and provide person-centred service responses
CHCCCS009 Facilitate responsible behaviour

ENTRY REQUIREMENTS

ACADEMIC REQUIREMENTS

- ✓ All students must be at least 18 years of age.
- ✓ Students must have completed Australian Year 10 or overseas equivalent.

ENGLISH LANGUAGE REQUIREMENTS

- ✓ **Certificate III in Individual Support** students must have a minimum English language proficiency of IELTS 5.0 or equivalent.
- ✓ **Certificate IV in Ageing Support & Diploma of Community Services** students must have a minimum English language proficiency of IELTS 5.5 or equivalent.
- ✓ Students may also successfully complete one of the following courses with Greenwich College: General English*, English for Business, Cambridge PET*, FCE and CAE, EVS, EAP and IELTS**
- ✓ Direct entry for students on passing Greenwich College Placement Test, online and on campus testing options.

*Certificate III – Intermediate level & Certificate IV/Diploma – Upper Intermediate level.

**With exit point of 5.0 or higher for Certificate III in Individual Support and exit point of 5.5 or higher for Certificate IV in Ageing Support & Diploma of Community Services.

INDUSTRY PLACEMENT

As part of our Health and Care courses, all students must complete mandatory work placement hours. Being a skills based course, work placement is vital in bringing real life knowledge to the students' learning experiences and prepares them to be 100% job ready. At Greenwich College we have dedicated placement coordinators who are tasked with securing industry placement for each of our students, so they are in good hands.

At time of placement all Health & Care students must hold or be prepared to apply for an Australian National Police Clearance check – this is a compulsory requirement for students who undertake workplace training in Australia. In addition, a current vaccination/immunisation certificate and proof of immunity are required before placement.

THEORY & SIMULATIONS

- ✓ **Two full days on campus** (8.00 a.m – 4.30 p.m) *and*,
- ✓ **One half day on campus** (8.00 a.m – 12.00 p.m or 12.30 p.m – 4.30 p.m)
- ✓ Skills development classes & self-directed learning (optional)

WORK PLACEMENT

- ✓ Last term of each course
- ✓ **Certificate III and IV** 120 hours each
- ✓ **Diploma** 200 hours

OTHER COURSES AT GREENWICH COLLEGE

Greenwich College offers a range of courses in English, Management, Hospitality and Health and Care, thoughtfully designed to empower you in launching your desired career, whether it's in Australia or any other corner of the globe. **Say hello to a new world of possibilities!**

ENGLISH COURSES

PROFICIENCY LEVEL	BEGINNER	ELEMENTARY	PRE INTERMEDIATE	INTERMEDIATE	UPPER INTERMEDIATE	ADVANCED	PROFICIENCY		
GENERAL ENGLISH	GENERAL ENGLISH								
		PRONUNCIATION IN CONTEXT							
CAMBRIDGE			KET	PET	FCE1	FCE2	CAE1	CAE2	CPE
IELTS				FOUNDATION		ADVANCED			
ENGLISH FOR SPECIAL PURPOSES				EVS					
					EAP				
				ENGLISH FOR BUSINESS					
				ENG+ CREATIVE TECH					

MANAGEMENT

QUALIFICATION	COURSE	DURATION	CODE
Certificate II	Business – Workplace Skills	24 weeks	BSB20120
Certificate IV	Business	40 – 44 weeks	BSB40120
Diploma	Business – Digital Transformation	52 weeks	BSB50120
Graduate Diploma	Management – Learning	52 weeks	BSB80120
Certificate IV	Leadership & Management	40 – 44 weeks	BSB40520
Diploma		52 weeks	BSB50420
Advanced Diploma		52 weeks	BSB60420
Certificate IV	Project Management Practice	40 – 44 weeks	BSB40920
Diploma	Project Management	52 weeks	BSB50820
Advanced Diploma	Program Management	52 weeks	BSB60720
Certificate IV	Marketing & Communication	40 – 44 weeks	BSB40820
Diploma		52 weeks	BSB50620



HOSPITALITY CULINARY PACKAGE PROGRAMS

QUALIFICATION	COURSE	DURATION	CODE
Accelerated Culinary Program (ACP)			
Certificate IV	Kitchen Management	84 weeks	SIT40521
Diploma	Hospitality Management	26 weeks	SIT50422
Executive Chef Training (ECT)			
Certificate IV	Kitchen Management	84 weeks	SIT40521
Diploma	Hospitality Management	26 weeks	SIT50422
Advanced Diploma	Hospitality Management	34 weeks	SIT60322

ONLINE COURSES AT GREENWICH COLLEGE

PTE TEST
PREPARATION

This Greenwich College-created, self-guided course covers all you'll need to know about how to achieve a high score in the Pearson Test of English (PTE) academic test.

- ✔ Access up to 200 types of exercises, 50 in each skill (speaking, reading, listening & writing).
- ✔ Get 50 practise tests for free.

AUSTRALIAN
SURVIVAL ENGLISH

Begin your Australian adventure at home! This course will introduce you to Australian slang and idioms so that you can feel confident speaking English from your first day in Australia. Improve your English skills by focusing on:

- ✔ Listening
- ✔ Comprehension
- ✔ Vocabulary
- ✔ Functional everyday language

FURTHER STUDY OPTIONS

Do you want to go to further study at University or College? Greenwich College is a highly regarded direct entry pathway provider for selected leading Australian Universities and Colleges – so you can gain entry without needing to complete an official entrance exam.

We have your options and your choices covered. With a great range of pathway partners, we help you reach your goal and your new future in your own way.



SCAN TO SEE ALL PARTNERS



A young woman with short dark hair, wearing a grey knit beanie and a green long-sleeved shirt, is looking down at a tablet computer she is holding. She is smiling slightly. She is in a crowd of other students, some of whom are wearing green shirts. In the background, a person's hands are visible, holding a small, round, textured object (possibly a coconut) above the woman's head. The overall image has a soft, slightly blurred background and a color palette dominated by greens and greys.

YOUR **SUCCESS** STARTS
AT **GREENWICH COLLEGE.**



