



## HEALTH & CARE COURSES



# ACCREDITATIONS & ASSOCIATIONS

## Australian Skills Quality Authority (ASQA)

ASQA is the recognition and registering authority in Australia for all RTOs that issue Australian Qualifications Framework (AQF) qualifications and statements of attainment. ASQA approves the provision of courses to overseas students studying in Australia which are listed on the Commonwealth Register of Institutions and Courses for Overseas Students (CRICOS).

## Recognition of Prior Learning (RPL)

RPL assesses a person's skills and knowledge they have achieved through informal education and training, as well as course credit for previous formal education and training. RPL is only available for Australian Qualifications Framework (AQF) awards. Contact us for more information on how to apply.

## Flexible Learning & Assessment

Greenwich College programs have flexible delivery methods and we ensure assessments are fair and equitable. We vary our learning methods as well as provide flexible assessments to meet individual special learning needs. The important focus is placed on the student achieving the required learning outcomes, competencies, and/or the standards rather than the method itself.

## Australian Quality Training Framework (AQTF)

The AQTF is the national set of standards which assures nationally consistent, high quality vocational training and assessments in Australia.



Greenwich College is a proud member of the NextEd Group, a leading training provider delivering accredited and non-accredited education and training solutions throughout Australia and internationally.





# TABLE OF CONTENTS

04	Greenwich College Campuses
06	Health & Care Overview
07	Certificate III in Individual Support (Ageing & Disability)
08	Certificate IV in Ageing Support
09	Diploma of Community Services (Case Management)
10	Entry Requirements & Further Study Options
11	Other Courses at Greenwich College
13	Online Courses at Greenwich College



# OUR CAMPUS LOCATIONS

Greenwich College has six campuses across Australia offering our Health & Care courses. Our well-equipped campuses in Sydney, Melbourne, Brisbane, Gold Coast, Perth and Adelaide are purpose-built for students' learning, including modern facilities, spacious classrooms and attractive breakout areas.

Our new health care labs are equipped with the latest equipment necessary to enhance students hands-on practical learning experience in preparation for real-life in ageing and disability facilities.

Click on each city for more information on our campuses!

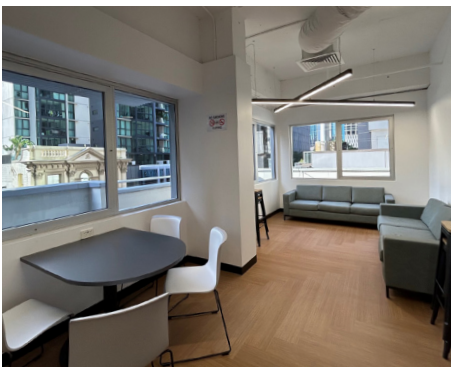
## SYDNEY



## MELBOURNE



## BRISBANE







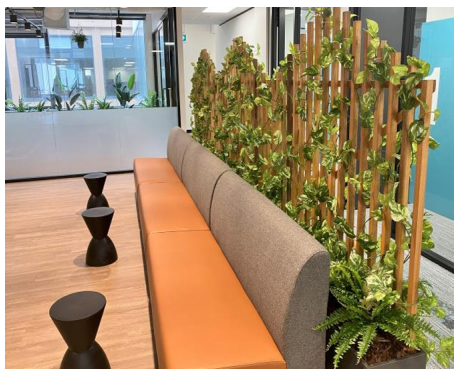
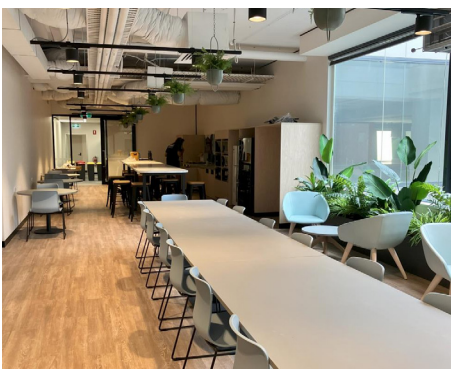
**GOLD COAST**



**PERTH**



**ADELAIDE**



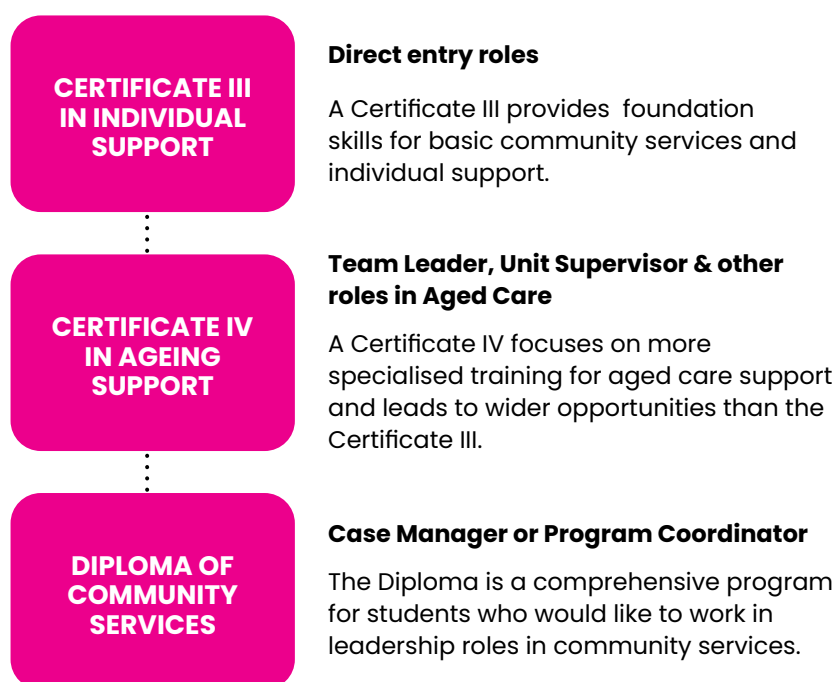
# HEALTH & CARE

## COURSES OVERVIEW

### EMBARK ON A REWARDING JOURNEY WITH GREENWICH COLLEGE

With professional trainers boasting extensive industry experience, our courses are designed to meet the rising demand for skilled professionals, aligning with the Australian government's projection of a 15.8% job growth in Health Care and Social assistance by 2026. Our comprehensive curriculum ensures you gain practical skills and industry-relevant knowledge, providing a solid foundation for a successful career. Join us and make a meaningful difference in the world of healthcare.

### EXAMPLE PATHWAYS



ENTRY REQUIREMENTS			
	Certificate III	Certificate IV	Diploma
Academic	18 years of age and over & completed year 10		
IELTS	IELTS 5.0 (Intermediate Level)	IELTS 5.5 (Upper-Intermediate Level)	
Additional	<ul style="list-style-type: none"><li>• Signed Application Form</li><li>• Passport copy – must have sufficient approval to cover the duration of the course</li><li>• Transcript, USI &amp; Completion Certificate – required for Credit Transfer</li><li>• Genuine Temporary Entrant for students applying for Student Visa</li><li>• Current Visa details for onshore applications</li><li>• Statement of Purpose – Level 2 &amp; 3 countries</li><li>• Evidence of financial capacity – Level 3 countries</li></ul>		



# CERTIFICATE III IN INDIVIDUAL SUPPORT

## CHC33021 AGEING & DISABILITY

This dual qualification entry level course is designed for students who are interested in pursuing a career in the aged care, disability support or community services sectors. It's a course for those who are compassionate, patient, and have a genuine desire to help others.

COURSE DURATION 4 TERMS • 32 WEEKS	
Term 1, 2 & 3	In class
Term 4	Work placement
24 Weeks	Study
8 Weeks	Holiday
120 Hours	Work placement

Work placement is to be undertaken in an appropriate health care facility or community services environment.

CAREER PATHWAY
✔ Personal Care Assistant
✔ Respite Care Worker
✔ Lifestyle Support Worker
✔ Community Support Worker
✔ Disability Support Worker
✔ Aged Care Worker
✔ Nursing Assistant

CORE UNITS (9)
CHCCOM005 Communicate and work in health or community services
HLTWHS002 Follow safe work practices for direct client care
CHCLEG001 Work legally and ethically
CHCDIV001 Work with diverse people
CHCCCS041 Recognise healthy body systems
CHCCCS031 Provide individualised support
CHCCCS038 Facilitate the empowerment of people receiving support
CHCCCS040 Support independence and wellbeing
HLTINF006 Apply basic principles and practices of infection prevention and control

ELECTIVE UNITS (6)
CHCPAL003 Deliver care services using a palliative approach
CHCDIS011 Contribute to ongoing skills development using a strengths-based approach
CHCAGE013 Work effectively in aged care
CHCDIS020 Work effectively in disability support
CHCAGE011 Provide support to people living with dementia
CHCDIS012 Support community participation and social inclusion

# CERTIFICATE IV IN AGEING SUPPORT

## CHC43015

The Certificate IV in Ageing Support is a more advanced qualification that builds on the basic skills acquired in the Certificate III in Individual Support. It prepares students to take on a more senior role, contributing effectively to the well-being of older people in residential and community settings.

COURSE DURATION 6 TERMS • 52 WEEKS	
Term 1, 2, 3, 4 & 5	In class
Term 6	Work placement
36 Weeks	Study
16 Weeks	Holiday
120 Hours	Work placement

Work placement is to be undertaken in an appropriate health care facility or community services environment.

CAREER PATHWAY
✓ Aged Care Worker
✓ Personal Care Worker
✓ Care Service Employee
✓ Care Support Worker
✓ Care Team Leader
✓ Client Care Advisor
✓ Community Care Worker
✓ Personal Care Worker

CORE UNITS (15)
CHCDIV001 Work with diverse people
HLTAAP001 Recognise healthy body systems
CHCCCS031 Provide individualised support
HLTWHS002 Follow safe work practices for direct client care
CHCAGE011 Provide support to people living with dementia
CHCPAL003 Deliver care services using a palliative approach
CHCPRP001 Develop and maintain networks and collaborative partnerships
CHCASV001 Facilitate the interests and rights of clients
CHCAGE009 Provide services for older people
CHCCCS038 Facilitate the empowerment of people receiving support
CHCAGE010 Implement interventions with older people to reduce risk
CHCCCS036 Support relationships with carer and family
CHCCCS006 Facilitate individual service planning and delivery
CHCLEG003 Manage legal and ethical compliance
CHCCCS040 Support independence and wellbeing

ELECTIVE UNITS (3)
CHCDIS018 Facilitate ongoing skills development using a person centered approach
CHCDIS017 Facilitate community participation and social inclusion
HLTAID011 Provide first aid



# DIPLOMA OF COMMUNITY SERVICES

## CHC52021 CASE MANAGEMENT

This Diploma program is designed for students who wish to pursue careers as community service managers, coordinators, or team leaders.

This course extends beyond aged care and focuses on a broader range of community services. This diploma is suitable for students aspiring to work in leadership or management roles within community service organisations, dealing with diverse social issues such as homelessness, mental health, and family support.

COURSE DURATION 6 TERMS • 52 WEEKS	
Term 1, 2, 3, 4 & 5	In class
Term 6	Work placement
36 Weeks	Study
16 Weeks	Holiday
200 Hours	Work placement

Work placement is to be undertaken in an appropriate health care facility or community services environment.

CAREER PATHWAY
✔ Case Coordinator
✔ Case Management Supervisor
✔ Case Worker or Case Manager
✔ Community Care Worker
✔ Community Services Worker
✔ Community Services Manager
✔ Welfare Support Worker
✔ Program Coordinator
✔ Team Leader

CORE UNITS (12)
HLTWHS003 Maintain work health and safety
CHCLEG003 Manage legal and ethical compliance
CHCDIV001 Work with diverse people
CHCDIV002 Promote Aboriginal and/or Torres Strait Islander cultural safety
CHCDEV005 Analyse impacts of sociological factors on people in community work and services
CHCDFV001 Recognise and respond appropriately to domestic and family violence
CHCCSM013 Facilitate and review case management
CHCMFT005 Facilitate workplace debriefing and support processes
CHCCCO19 Recognise and respond to crisis situations
CHCCCS004 Assess co-existing needs
CHCCCS007 Develop and implement service programs
CHCPRP003 Reflect on and improve own professional practice

ELECTIVE UNITS (8)
CHCCSM012 Coordinate complex case requirements
CHCCSM014 Provide case management supervision
CHCCSM010 Implement case management practice
CHCCSM016 Undertake advanced assessments
CHCMHS011 Assess and promote social, emotional and physical wellbeing
CHCDIS016 Develop and promote positive person-centred behaviour supports
CHCDIS015 Develop and provide person-centred service responses
CHCCCS009 Facilitate responsible behaviour

# INDUSTRY PLACEMENT

As part of our Health and Care courses, all students must complete mandatory work placement hours. Being a skills based course, work placement is vital in bringing real life knowledge to the students' learning experiences and prepares them to be 100% job ready. At Greenwich College we have dedicated placement coordinators who are tasked with securing industry placement for each of our students, so they are in good hands.

At time of placement all Health & Care students must hold or be prepared to apply for an Australian National Police Clearance check – this is a compulsory requirement for students who undertake workplace training in Australia. In addition, a current vaccination/immunisation certificate and proof of immunity are required before placement.

## THEORY & SIMULATIONS

- ✓ Two full days on campus (8.00 a.m – 4.30 p.m) and,
- ✓ One half day on campus (8.00 a.m – 12.00 p.m or 12.30 p.m – 4.30 p.m)
- ✓ Skills development classes & self-directed learning (optional)

## WORK PLACEMENT

- ✓ Last term of each course
- ✓ Certificate III and IV 120 hours each
- ✓ Diploma 200 hours

---

## FURTHER STUDY OPTIONS

Do you want to go to further study at University or College? Greenwich College is a highly regarded direct entry pathway provider for selected leading Australian Universities and Colleges – so you can gain entry without needing to complete an official entrance exam.



[Click here](#) to view all of our partners!



# OTHER COURSES AT GREENWICH COLLEGE

Greenwich College offers a range of courses in English, Management & Hospitality, thoughtfully designed to empower you in launching your desired career, whether it's in Australia or any other corner of the globe. Say hello to a new world of possibilities!

## ENGLISH COURSES

Click on each heading to view our brochures for each course!

PROFICIENCY LEVEL	BEGINNER	ELEMENTARY	PRE INTERMEDIATE	INTERMEDIATE	UPPER INTERMEDIATE	ADVANCED	PROFICIENCY		
GENERAL ENGLISH	GENERAL ENGLISH								
		PRONUNCIATION IN CONTEXT							
CAMBRIDGE			KET	PET	FCE1	FCE2	CAE1	CAE2	CPE
IELTS				FOUNDATION		ADVANCED			
ENGLISH FOR SPECIAL PURPOSES					EVS				
						EAP			
					ENGLISH FOR BUSINESS				
					ENG + CREATIVE TECH				





## MANAGEMENT

COURSE	QUALIFICATION	DURATION	COURSE CODE	CRICOS CODE
<b>Business</b>	Certificate II in Workplace Skills	24 weeks	BSB20120	104741J
	Certificate IV in Business	40 – 44 weeks	BSB40120	104743G
	Diploma of Business – Digital Transformation	52 weeks	BSB50120	104744F
<b>Management</b>	Graduate Diploma of Management – Learning	52 weeks	BSB80120	107097H
<b>Leadership &amp; Management</b>	Certificate IV	40 – 44 weeks	BSB40520	103951G
	Diploma	52 weeks	BSB50420	104165C
	Advanced Diploma	52 weeks	BSB60420	104745E
<b>Project Management</b>	Certificate IV in Project Management Practice	40 – 44 weeks	BSB40920	103918H
	Diploma of Project Management	52 weeks	BSB50820	104117M
	Advanced Diploma of Program Management	52 weeks	BSB60720	104433K
<b>Marketing &amp; Communication</b>	Certificate IV	40 – 44 weeks	BSB40820	104746D
	Diploma	52 weeks	BSB50620	104747C

## HOSPITALITY CULINARY PACKAGE PROGRAMS

COURSE	QUALIFICATION	DURATION	COURSE CODE	CRICOS CODE
ACCELERATED CULINARY PROGRAM (ACP)				
<b>Kitchen Management</b>	Certificate IV	84 weeks	SIT40521	111584C
<b>Hospitality Management</b>	Diploma	26 weeks	SIT50422	111585B
EXECUTIVE CHEF TRAINING (ECT)				
<b>Kitchen Management</b>	Certificate IV	84 weeks	SIT40521	111584C
<b>Hospitality Management</b>	Diploma	26 weeks	SIT50422	111585B
<b>Hospitality Management</b>	Advanced Diploma	34 weeks	SIT60322	111586A



# ONLINE COURSES AT GREENWICH COLLEGE

## PTE TEST PREPARATION

This Greenwich College-created, self-guided course covers all you'll need to know about how to achieve a high score in the Pearson Test of English (PTE) academic test.

- Access up to 200 types of exercises, 50 in each skill
- Get up to 50 practice tests for free

## AUSTRALIAN SURVIVAL ENGLISH

Begin your Australian adventure at home! This course will introduce you to Australian slang and idioms so that you can feel confident speaking English from your first day in Australia. Improve your English skills by focusing on:

- Listening
- Comprehension
- Vocabulary
- Functional every language

## CERTIFIED ASSOCIATE IN PROJECT MANAGEMENT

This online preparation course prepares you for an Internationally recognised Project Management Certificate.

- Demonstrate your ability and stand out in your career
- Course Trainer is Project Management Institute (PMI) accredited
- Test materials and mock test included

## VIRTUAL INTERNSHIP

We've teamed up with Virtual Internships to offer you the opportunity to participate in a remote internship with a global company in your chosen field.

- Work with thousands of innovative companies in 80+ countries
- Work directly with founders and c-suite members
- Gain an edge over your competition in job applications

Click on each heading for further course information on the website!

A young woman with short dark hair, wearing a grey knit beanie and a green long-sleeved shirt, is looking down at a tablet computer she is holding. She is smiling slightly. Above her, two hands are holding a coconut. The background is a blurred crowd of people, mostly wearing green shirts, suggesting a large gathering or event. The overall image has a soft, teal-colored overlay.

YOUR **SUCCESS** STARTS  
AT **GREENWICH COLLEGE.**









Greenwich College is a proud member of the NextEd Group, a leading training provider delivering accredited and non-accredited education and training solutions throughout Australia and internationally.



**RTS HERE • YOUR SUCCESS STARTS HERE • YOUR SUCCESS STARTS HERE • YOUR SUCCESS STARTS HERE • YOUR SUCCESS STARTS HERE • YOUR SUCCESS STARTS HERE • YOUR SU**